

INSTALLATION GUIDE



Pump Bracket Set Ford 03 Ford FE Block 390, 427 & 428

P/N: TCP PBS-FD-03

DESCRIPTION:

PUMP BRACKET SET FORD 03 INCLUDES BILLET ALUMINUM BRACKET; SPACERS AND HARDWARE;
ATTACHES KRC POWER STEERING PUMP TO DRIVER SIDE CYLINDER HEAD AND WATER PUMP

APPLICATIONS:

FITS FORD FE BLOCK 390, 427 & 428

PARTS LIST

Item	Part Number	Description	Qty
1	7900-146	KRC Pump Bracket FE Ford Block 390-427-428	1
-	7918-010	Hardware Bag for TCP PBS-FD-03	1
-	7918-012	Spacer Set Ford Power Steering Pump Bracket	1

7918-010 Hardware Bag

2	3100-031C3.25Y	Bolt 5/16-18 x 3-1/4" Hex Head Cap Screw	2
3	3100-038C3.50Y	Bolt 3/8-16 x 3-1/2" Hex Head Cap Screw	1
4	3100-038C4.25Y	Bolt 3/8-16 x 4-1/4" Hex Head Cap Screw	2
5	3119-031-18C	Flange Nut 5/16-18; 1/2 Hex	1
6	3120-031S-Y	Washer 5/16 Flat SAE .345 x .690 x .060 Thick	2
7	3120-038S-Y	Washer 3/8 Flat SAE .410 x .810 x .060 Thick	3

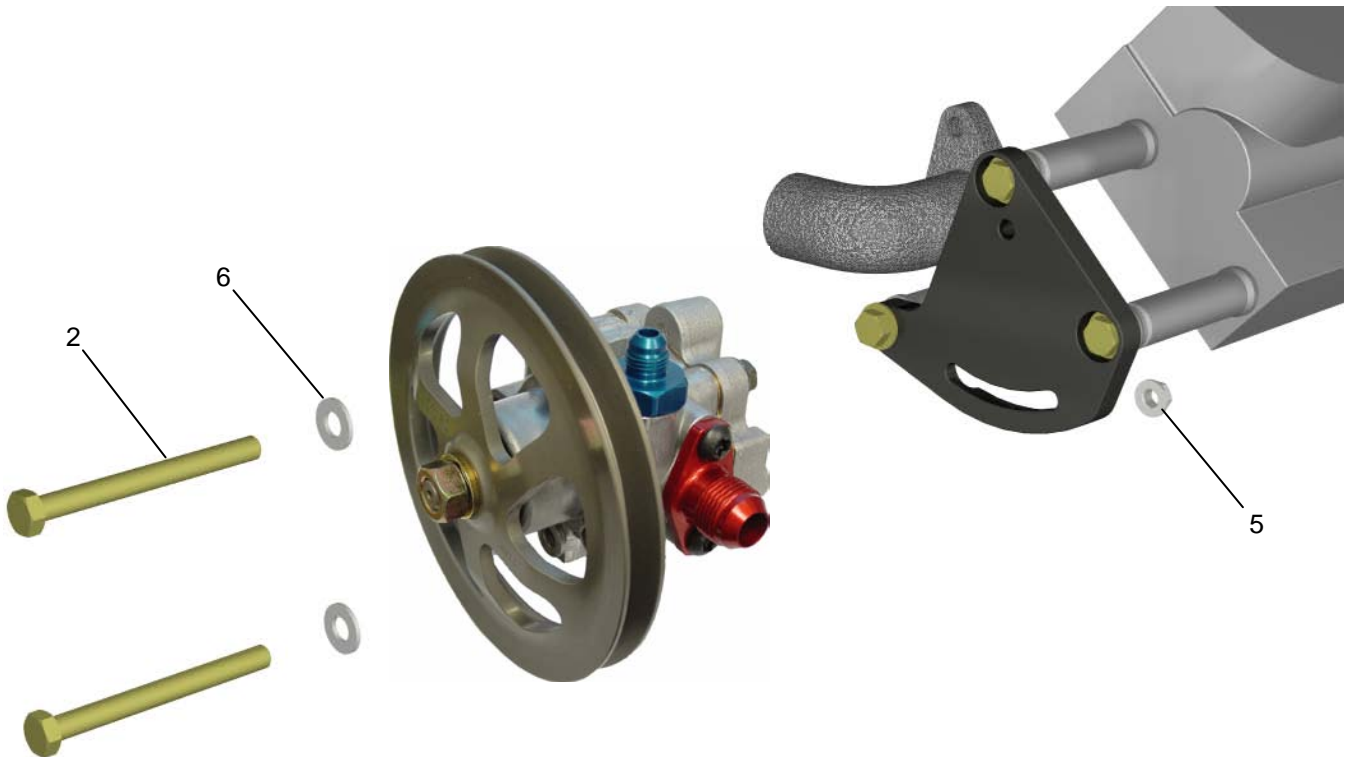
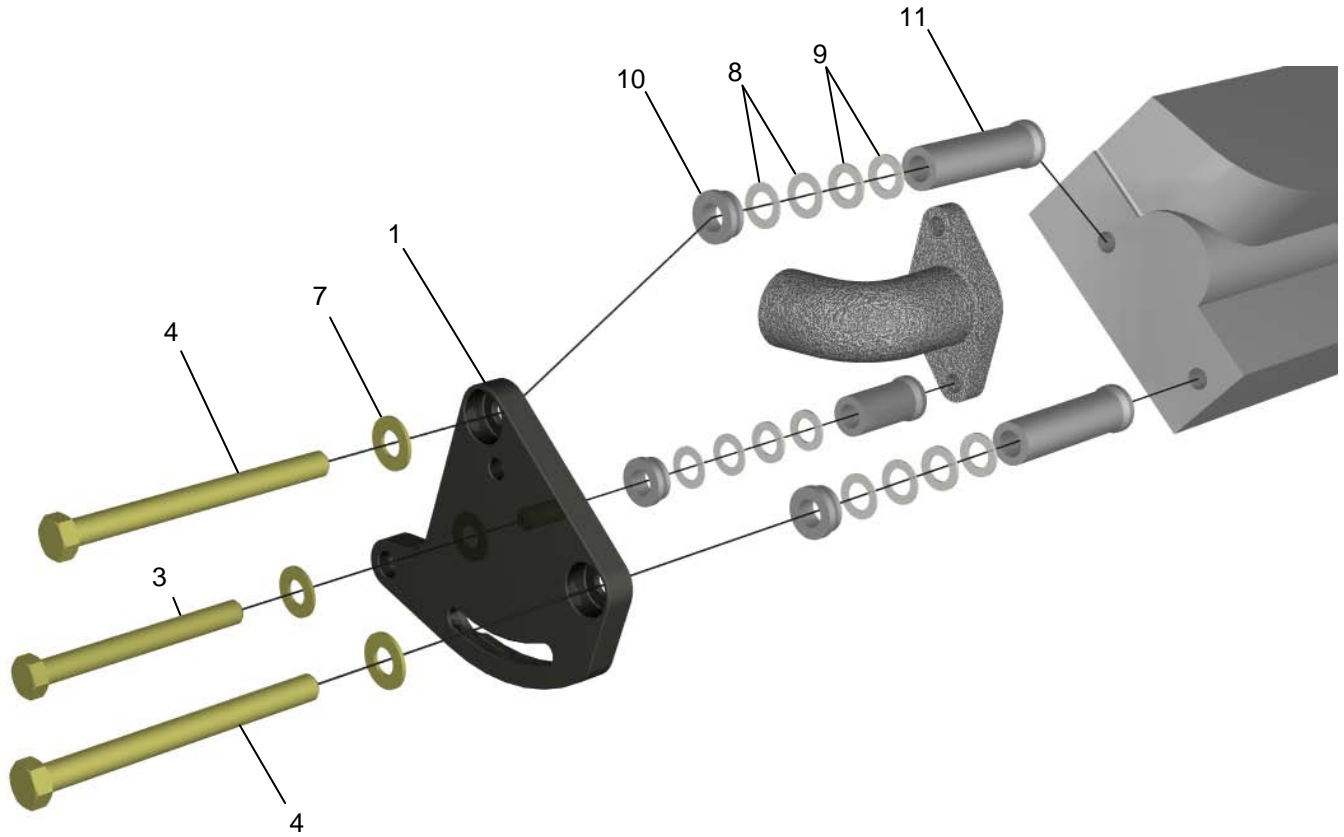
7918-012 Hardware Bag Spacer Set

8	3109-044S1-S	Shim 7/16 Flat .453 x .750 x .032 Thick	6
9	3109-044S2-S	Shim 7/16 Flat .453 x .750 x .063 Thick	6
10	7900-170-0370	Spacer .453 ID x .370 Long x .75 OD with .850 Shoulder	3
11	7900-170-2910	Spacer .453 ID x 2.910 Long x .75 OD with .850 Shoulder	3

INSTRUCTIONS

- 1) Loosely bolt pump to bracket using 5/16" hardware.
- 2) Loosely bolt pump bracket assembly to cylinder head using a 3/8" bolts in locations shown in illustration.
 - a. This is to verify the correct length for the spacers; all bolts do not need to be inserted.
- 3) The spacer for the water pump bolt will need to be cut for a correct fit due to variations in castings from different manufacturers.
 - a. The correct length for a stock water pump application is 1-5/8", your application may vary.
 - b. Cut should be made to narrow end of spacer and must be square.
- 4) Use a straight edge along face of pulleys to ensure all pulleys are square and inline.
 - a. Supplied shims may have to be added between the spacers for alignment, as shown in illustration.
 - b. Depending upon your configuration, one or more of the spacers may need to be shortened further if sharing the mounting position with additional accessories (i.e. A/C bracket, coil, etc.).
- 5) Unbolt assembly.
- 6) Install bracket and spacers using 3/8" hardware as shown in first illustration.
 - a. Torque bolts to 12-18 lb. ft.
- 7) Attach pump to bracket using 5/16" hardware.
 - a. Hardware can be inserted through pulley.
 - b. Upper bolt is the pivot bolt and should be installed 'finger-tight' until belt has been tensioned.
 - c. Lower bolt goes into flange nut and is tightened while holding tension on belt.
 - d. Torque bolt to 12-18 lb. ft.
- 8) See Hose Kit instructions for hose assembly, routing and hook-up.

ILLUSTRATIONS



WARRANTY NOTICE:

There are **NO WARRANTIES**, either expressed or implied. Neither the seller nor manufacturer will be liable for any loss, damage or injury, direct or indirect, arising from the use or inability to determine the appropriate use of any product. Before any attempt at installation, all drawings and/or instruction sheets should be completely reviewed to determine the suitability of the product for its intended use. In this connection, the user assumes all responsibility and risk. We reserve the right to change specification without notice. Further, Chris Alston's Chassisworks, Inc., makes **NO GUARANTEE** in reference to any specific class legality of any component. **ALL PRODUCTS ARE INTENDED FOR RACING AND OFF-ROAD USE AND MAY NOT BE LEGALLY USED ON THE HIGHWAY.** The products offered for sale are true race-car components and, in all cases, require some fabrication skill. **NO PRODUCT OR SERVICE IS DESIGNED OR INTENDED TO PREVENT INJURY OR DEATH.**

Total Control Products
A Chris Alston's Chassisworks, Inc. Brand
8661 Younger Creek Drive
Sacramento, CA 95828
Phone: 916-388-0288
Technical Support: tcptech@cachassisworks.com

